

### OUR COMPANY

At Nerevu Group, LLC (pronounced {nay-RAY-vo}), we develop real-time interactive dashboards and visualizations. Through our AI-powered solutions, we automate workflows, unify data silos, and transform data into actionable insights.

### PAST PERFORMANCE



Illinois Department of Healthcare and Family Services



Illinois Community College Board



Illinois Central College



Prairie Spine & Pain Institute



Illinois Department of Financial and Professional Regulation (IDFPR)



Tri-County (Peoria) Urban League



United Nations Office for the Coordination of Humanitarian Affairs (OCHA)



Peoria County



Greater Peoria Economic Development Council



MIT Space Exploration Initiative



GO2 For Lung Cancer

### SAMPLE PROJECTS

EMR Data Extraction ♦ [Disparity and Availability Study](#) ♦ Transportation Equity Study ♦ Web Application Development and Hosting ♦ Automated Dashboard System ♦ IT Infrastructure Modernization ♦ Real-time System Monitoring and Alerting

### OUR CAPABILITIES

#### Data Management

Data Integration & Migration ♦ Warehousing ♦ AI/ML ♦ Predictive Analytics ♦ Monitoring & Alerting

#### Application Development

Dashboards & Visualizations ♦ Cloud Infrastructure ♦ APIs ♦ Web Applications ♦ Process Automation (RPA)

#### API & Data Security

Access Management (IAM) ♦ Access Control (RBAC) ♦ Authentication & Authorization ♦ Data Backup

### DIFFERENTIATORS

10+ years in business  
20+ years combined data experience  
Led by engineers and data scientists



Illinois Business Enterprise Program (BEP)



Chicago Minority Supplier Development Council MBE



Illinois Small Business Set-Aside Program (SBSP)

### OUR TECHNOLOGIES



### NIGP

91829 Software Consulting

91871 IT Consulting

91875 Mgmt Consulting

92005 Cloud Computing

92007 Applications Software

**92022 Data Processing**

92040 Computer Programming

92045 Software Maint/Support

92078 Web Site Development

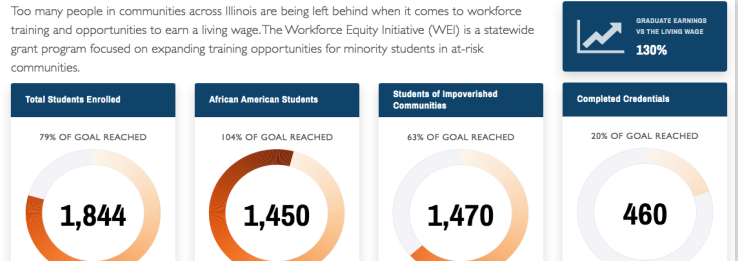
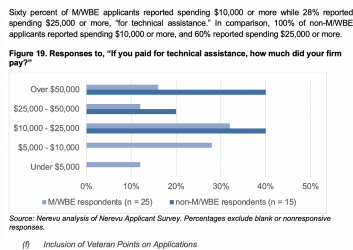
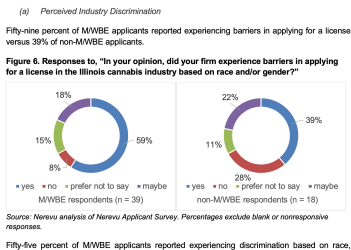


NEREVU GROUP, LLC  
820 SW ADAMS ST. SUITE C  
PEORIA, IL 61602

## OUR CAPABILITIES

API DEVELOPMENT	DASHBOARD DEVELOPMENT	CLOUD SERVERS	PREDICTIVE ANALYTICS	MIGRATION / INTEGRATION	PROCESS AUTOMATION	DATA SECURITY

Client	Project	Client Type	Prime	Capabilities
Illinois Department of Financial and Professional Regulation (IDFPR)	<a href="#">Disparity and Availability Study</a>	Government	✓	
Illinois Community College Board (ICCB)	<a href="#">Workforce Equity Initiative Website</a>	Government	✓	
GO2 For Lung Cancer	<a href="#">Concept to Clinic</a>	Non-profit	✗	
Illinois Department of Healthcare and Family Services (HFS)	<a href="#">CommunityConnect Dashboard</a>	Government	✗	
Greater Peoria Economic Development Council (GPEDC)	Data Hub Automation	Government	✓	
Peoria County	Transportation Equity Study	Government	✓	
Illinois Central College	Cybersecurity Training	Higher Education	✓	



## DISPARITY AND AVAILABILITY STUDY

Concept To Clinic Open Image Detect and Select Annotate and Segment Report and Export

Candidate 1 (p=0.953)

Centroid (predicted):  
X: 530  
Y: 228  
Slice index: 2

Dismiss  Mark concerning

Candidate 2 (p=0.568)

## CONCEPT TO CLINIC

## WORKFORCE EQUITY INITIATIVE

FQHC HHS All Dashboard Control Daylight Time

Program count this hour Program count today Program count this week Program count this month

## COMMUNITYCONNECT (OCC) DASHBOARD