

### OUR COMPANY

At Nerevu Group, LLC (pronounced {nay-RAY-voo}), we develop real-time interactive dashboards and visualizations. Through our AI-powered solutions, we automate workflows, unify data silos, and transform data into actionable insights.

### PAST PERFORMANCE



Illinois Department of Healthcare and Family Services



Illinois Community College Board



Illinois Central College



Prairie Spine & Pain Institute



Illinois Department of Financial and Professional Regulation (IDFPR)



Tri-County (Peoria) Urban League



United Nations Office for the Coordination of Humanitarian Affairs (OCHA)



Peoria County



Greater Peoria Economic Development Council



MIT Space Exploration Initiative



GO2 For Lung Cancer

### SAMPLE PROJECTS

EMR Data Extraction ♦ [Disparity and Availability Study](#) ♦ Transportation Equity Study ♦ Web Application Development and Hosting ♦ Automated Dashboard System ♦ IT Infrastructure Modernization ♦ Real-time System Monitoring and Alerting

### OUR CAPABILITIES

#### Data Management

Data Integration & Migration ♦ Warehousing ♦ AI/ML ♦ Predictive Analytics ♦ Monitoring & Alerting

#### Application Development

Dashboards & Visualizations ♦ Cloud Infrastructure ♦ APIs ♦ Web Applications ♦ Process Automation (RPA)

#### API & Data Security

Access Management (IAM) ♦ Access Control (RBAC) ♦ Authentication & Authorization ♦ Data Backup

### DIFFERENTIATORS

10+ years in business  
20+ years combined data experience  
Led by engineers and data scientists



### OUR TECHNOLOGIES



### NAICS

513210 Software Publishers	541511 Computer Programming	541611 Admin & General Consulting
<b>518210 Data Processing</b>	541512 Computer System Design	541690 Technical Consulting
519290 Web Search Portals	541519 Other Computer Services	541910 Marketing Research

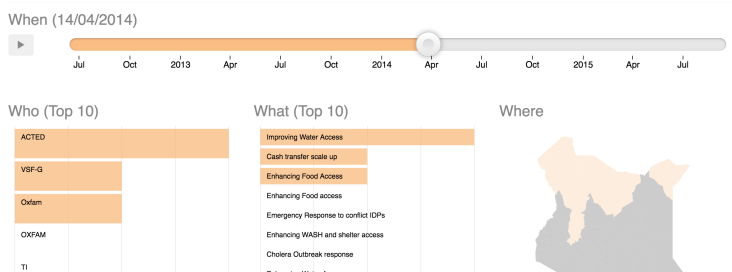


NEREVU GROUP, LLC  
820 SW ADAMS ST. SUITE C  
PEORIA, IL 61602

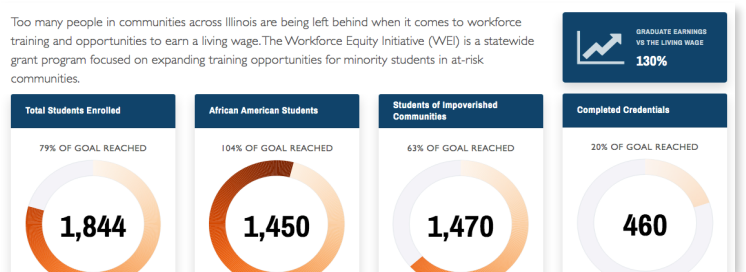
## OUR CAPABILITIES

API DEVELOPMENT	DASHBOARD DEVELOPMENT	CLOUD SERVERS	PREDICTIVE ANALYTICS	MIGRATION / INTEGRATION	PROCESS AUTOMATION	DATA SECURITY

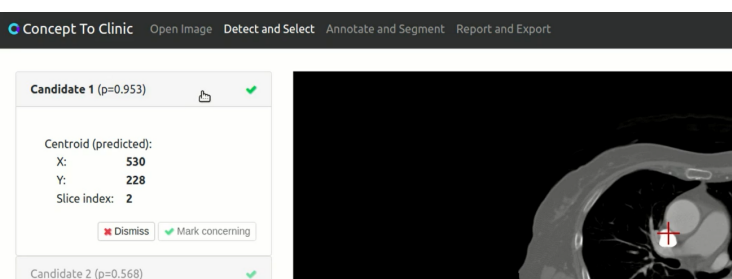
Client	Project	Client Type	Prime	Capabilities
Illinois Department of Financial and Professional Regulation (IDFPR)	<a href="#">Disparity and Availability Study</a>	Government	✓	
Illinois Community College Board (ICCB)	<a href="#">Workforce Equity Initiative Website</a>	Government	✓	
GO2 For Lung Cancer	<a href="#">Concept to Clinic</a>	Non-profit	✗	
Illinois Department of Healthcare and Family Services (HFS)	<a href="#">CommunityConnect Dashboard</a>	Government	✗	
MIT Space Exploration Initiative	Lunar Open Architecture (LOA) Website	Higher Education	✓	
United Nations OCHA	<a href="#">Humanitarian Data Exchange (HDX)</a>	NGO	✓	
Prairie Spine & Pain Institute	EMR Data Extraction	Healthcare	✓	



**LA NIÑA CONSORTIUM**



**WORKFORCE EQUITY INITIATIVE**



**CONCEPT TO CLINIC**



**COMMUNITYCONNECT (OCC) DASHBOARD**